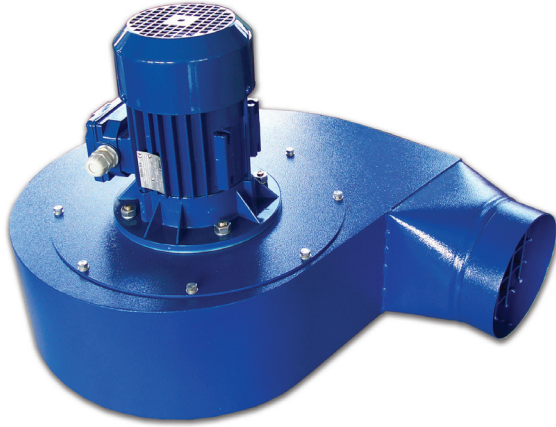




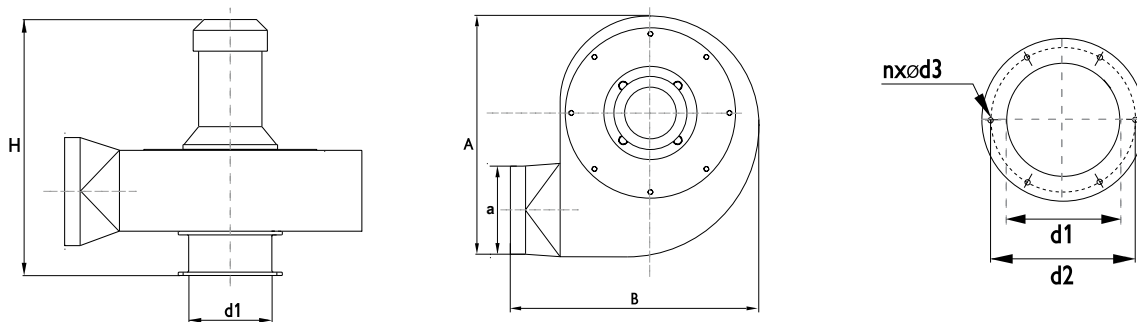
EXTRACTION FAN

ZWR



ZWR fans have been designed to work with source capture devices as well as with clean or polluted air extraction installations. Aluminium impellers enclosed in steel powder coated housings ensure high airflow efficiency and spark-proof design. ZWR fan units are used to exhaust non-explosive and chemically non-aggressive gases of temperatures up to 40°C.

The fan is perfect for fume and dust extraction especially with point extraction products such as fume extraction arms, extension booms, sliding rails, car exhaust hose reels or hose drops.



Type	A	B	H	d1	a	n	d2
ZWR-03	513	575	427	157	158	6	195
ZWR-04	577	635	481	157	198	6	195
ZWR-05	651	691	492	197	198	8	246

